

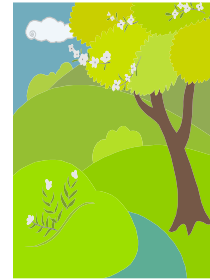
Seek the Lord, Study God's Word, Serve the World

---

## NEWSLETTER NOVEMBER 2009

Home to...

# Still Waters Cafe



“A **no cost** dining service to those who are suffering economic hardship, homelessness or who are lonely and wish to have a dining companion”

Amenities at the café:

- **Mealtime is 5:00–7:00 p.m. every Thursday**
- Fresh home cooked meal served in a family atmosphere with home style table settings.
- To go snack bags are offered.
- Highchairs and booster seats are available for the younger family members.
- There are wheelchair accessible entrances and bathrooms available.
- Prayer requests can be satisfied.
- Homework help is available for school age children K-8<sup>th</sup> grade 3:30 – 5:00 p.m. and includes a snack.

**For further information please call 805-526-7577**

---

## Prayers needed...



*Dear Friends and Family, if there are friends and loved ones whom you would like to have prayers for, or military persons on active duty, please contact the church office at 526-7577 and we will list them in our bulletin and newsletter.*

**REMEMBER IN PRAYER** ..... Pastor Gary and our church leaders.

**Undergoing cancer therapy** Daryl Barnett, Diane Voorhes, Geoff Connors (*Ralph Nelman's grandson-in-law*), Wendy Weathers (*friend of Elizabeth Hood*) Julie Rolph (*friend of Jan Yoder*).

**Under convalescent or hospice care**...Tommy Timms (cousin of Jeanne Fisher)

Hazel Gade (OSLC member), Tim Simpson

**Undergoing surgery, various tests, treatments, recuperating and continued comfort**...

Elsie Pusateri, Mike Moriarty (SVLC member), John Moore (SVLC member), Kristofer Maass (friend of the Baas family), Kenny Kotwitz, to regain some vision; Dorothy Myers; John Yanuklis, Pr. Kenn Bergmann; Sammi Brazenor; Christine and Paul (Pastor Lynn's friends); Lydia Christensen; Eloise Cooley (Marcia's mother); Good Shepherd Lutheran School; Laurie Kephart (John Yanuklis' daughter); Millie McDermott (Mary Kotwitz' mother); Mary Milligan (friend of Pastor Lynn); Margie Schuelke (Mary Kotwitz' aunt); Pastor Leslie Soyster; Kelly Stemler (Carol Howard's daughter); Irene Tangren's daughter, Debbie; Pr. Paul Werfelmann, John Yankulis Jr. (son of John Yankulis). Jim Geres (friend of Norma Studer), Hortensia Salcedo (Helen Anderson's mother), Becky Rodriguez (former manager for Luther's Attic).



**WE EXTEND OUR CHRISTIAN SYMPATHY TO...**To the friends and family of Dorothy Fee on the passing of her husband Keith on Monday, Oct. 26<sup>th</sup>. A Memorial Service was held at Shepherd of the Valley at 2:00 p.m. on Sunday, Nov. 1<sup>st</sup>.



**WE CONTINUE TO PRAY FOR AMERICA, THOSE FIGHTING IN FOREIGN LANDS AND FOR THE CONTINUED STRENGTH OF THE LEADERS OF THIS GREAT NATION**

**Our Military Personnel now serving:** John Parker, Shane Denning, Tyson and Blake Crosby, Joe Anderson, Mike Hultman, Brian Lowen, Nick Goldsmith, Brian Richardson, Frank King, Michael Kidd, Nisha Dean, Dan Balaun, Chris Labelle, Raymond Schooler, Captain Ted Slocum, David Bond, Wayne Combs, Jeffrey C.A. Bower, Jonathan Scholberg, Brett Launer, Jorden Gutowski, Allen Steinke, Robert Deobler, Sgt Elliott Van Marion. Matthew Wilkins, Cpl. Brett Tyre, Travis Girard

**HOMELESS? IN SIMI VALLEY?**

The County of Ventura 2009 Homeless count has been updated. The total number of persons counted in Simi Valley was 303. There were 266 adults and 37 children. A breakdown of the data collected from adults is as follows:

- 1. Location** 98% of persons (298) were counted on the streets and 2% (5) in facilities;
- 2. Age** 5% of adults (12) were seniors (age 62+); 18% (48) were youth between the ages of 18 – 24; and 4 (1%) were unaccompanied youth (without parents) between the ages of 13-17.
- 3. Gender** 69% of adults (183) were men and 31% (83) were women;
- 4. Ethnicity** 69% of adults (183) were White; 23% (62) were Hispanic or Latino; 1% (2) were American Indian or Alaskan Native; 3% (8) were African American or Black; 1% (3) were Asian/Pacific Islander; and 3% (8) stated Other;
- 5. State Born** 67% of adults (178) were born in California;
- 6. Children** 12% (37) of the total number of persons counted were children;
- 7. Family Composition** 18 families were counted—10 two-parent family with children and 8 one-parent families with children. 20% of the homeless in Ventura County call Simi Valley “home”. “Lord, when did we see you hungry and homeless and invite you in?”



**Wedding Anniversaries for November**

**John & Kris Lowrey**

**Phil & Marlys Flugum**

**Dan & Deanna Nagelmann**

**Mike & Kaye Bloore**

**Thomas & Desnee Bole**

**Marvin & Jenny Kidd**

**David & Adrienne Stuck**

*If you are celebrating your anniversary this month also and you are not listed it maybe that the office does not have your anniversary date in our records, if you would like this information corrected please contact the church office 526-7577.*

**Note:** *this type of information can be of help to family generations who maybe tracking heritages*



**CONFIRMATION** 6<sup>TH</sup> – 7<sup>TH</sup> AND 8<sup>TH</sup> Grade Wednesday  
November 4, 11, 18, 25 at 7:00 p.m. December 2, 9<sup>th</sup> only also at 7:00 p.m.  
**From the Pastor...**

**SCRIP FOR THE HOLIDAYS**

Fall months make the stores think about Christmas. Decorations are up and specials are being advertised to lure the customer into buying their Christmas gifts early.

So maybe it is time for all of us to make our lists and plan on not only giving gift cards but using them to make our Christmas purchases. Of course you know that you can get groceries and shop drug stores with Scrip. But it might be a good idea to stop by the SCRIP table on Sunday and pick up your copy of our vendor list.

Giving gift cards is always welcome and we will again be giving free gift card holders with every purchase.

However, remember that gift cards are useable at any time. If you see a sale at Kohl's , for instance, use your gift card not only to save money on the sale, but to make sure the church receives a percentage of what you spend as a donation from Kohl's itself. And of course this goes for every store and every purchase.

At this time of year stores very frequently offer extra percentages and here are the latest. KFC, Shell, and Sports Authority are offering extra on every card. See's candy gives us 25% of every purchase and Marie Calendars gives 18%. Watch the bulletin for every new deal as it becomes available.

With all of us planning together, you can complete your gift buying quickly and donate a sizable amount to the church as well. So see us at the SCRIP table on Sunday mornings between services.



## **Y.I.M.A.H THANKSGIVING POTLUCK**

All those 50 years of age and older who are "Young In Mind And Heart"

**November 19<sup>th</sup> 11:30 a.m.**

For further information please call the church office 526-7577



**Third graders** who received their Bibles from the congregation are:  
Garrett Berg - Amber Caranchini - Danielle Dawson - Trevor Flugum  
Lindsey Mueller - Jenna Stuck - Alyssa Weimann



### **From the Library**

"In all things give thanks to God". Although we should (and probably do) thank God every day, this is the month in which we are reminded to do so. Congress has set aside this special Thanksgiving Day to remind us all of how much we have to be thankful for.

How about setting aside some time for a special family time for thanksgiving? Let every family member talk about the blessings that surround us daily. The Library has prepared a special number of books to put on the book cart. These will help you think about your blessings both large and small, constant and rare, earth shaking and ordinary.

The cart is on the patio each and every Sunday for easy access. It takes just a few minutes to check out the special selections chosen each month for your convenience. Please remember to sign the pocket card and leave it in the box.

This is also the time of year in which your Library committee takes inventory. In order to do an accurate job, we request that you look around your house and return any books that you have checked out.

Remember children do not have to sign out most books but be sure to check inside to see whether or not that particular book has a pocket card. If so, have the child sign it so that we can keep track of where it is.

And adults do not have to sign for books on the Free Book Exchange shelves. Just enjoy them and pass them on.

The committee gives thanks this month for all our readers and wishes you a very Happy and Blessed Thanksgiving.



### **PRESCHOOL NEWS**

One of a preschoolers favorite times of the year is Halloween, and our Halloween activities took place on Thursday, October 29th and Friday, October 30th. About 2 weeks ago, each child was given a brown paper bag to take home and make into a costume (we ask that the children's regular costumes stay at home) for our paper bag costume parade.

We saw legos, bumble bees, princesses, cowboys, pumpkins, bats, and the list goes on. It always amazes us what can be made out of a bag. Halloween treats were served for snack, and a fun time was had by all.

We look forward to the Thanksgiving season-perhaps one of the teachers favorite holidays, when we get to talk about blessings, and how God has blessed each child's life. Each classroom has a feast in which a favorite food is brought from home to share with their classmates.

Do you know of someone looking for a preschool and/or daycare for their child between the ages of 2.9 and 5 years of age? You would be surprised at how many families in the area do not know that Shepherd of the Valley has a preschool program. Be sure to pass our phone number on (526-9069).



**Shepherd of the Valley Lutheran Church  
Simi Valley Relay for Life  
2009 Golden Sneaker Award Winners  
5<sup>th</sup> consecutive win (1<sup>st</sup> win as SOV)**

Congratulations team!! We did it, another successful Relay for Life!!!

Thank you to:

- High Tech Car Care for being our business sponsor
  - Gail Garon, Lorna Sinn, Hugh Fisher, and Ila Davis for donations to the silent auction
    - McLain family and Ray Valderrama for transporting tables
      - Davids family for the use of their easy up
      - All our walkers for walking and collecting donations
  - All those who donated to the cause through donations and luminaries
    - Those that came out to support our survivors
  - For those that invited and brought friends and family to join us
    - For all the support, thoughts, and prayers
- Thank you to Todd and my family for being a very active part of this cause with me and for all their help

As you can see from above it takes our whole church community and friends to achieve our goal and to make the impact we did towards the fight against cancer. We are a true team. No one person accomplished this and no one or two people could do it alone. For many years I have used this verse to describe our success:

**“Just as each of us has one body with many members, and these members do not have the same function, so in Christ we who are many form one body, and each member belongs to all the others. We have different gifts, according to the grace given us. If a person’s gift is prophesying, let him use it in proportion to his faith. If it serving, let him serve; if it teaching, let him teach; if it is encouraging, let him encourage; if it contributing to the needs of others, let him give generously; if it is leadership, let him govern diligently; if it showing mercy, let him do it cheerfully.” Romans 12:4-8**

Praise the Lord for the body of Christ from Shepherd of the Valley Lutheran Church!

**SOV Facts:**

- We have the honor of winning the Golden Sneaker award for the 5<sup>th</sup> year in a row!
- To date my records show that we have raised \$13866.75! This does not include any matching funds or the money brought in from the silent auction. I am confident that once we have all the final numbers we will be at or over **\$14,000!**
- We had 61 registered walkers
- We had 36 walkers register online this year and made \$3,455 in online donations
- We had approximately 10 less walkers and made about \$1,000 more dollars than 2008. We even did this without a major fundraiser such a BINGO

**Simi Relay Facts:**

- Exceeded their online goal of \$125,000
- Have over \$300,000 total donations and still counting toward their overall goal of \$400,000
- Had a record number of teams participate this year

We had great success in the fight against cancer however.....

There is no finish line.....until we find a cure

Keep fighting back! - *Julie Honda*


**WOMEN'S THANKOFFERING SERVICES  
NOVEMBER 22, 2009**






This is our day to shine! Our women are incredible!  
Help us celebrate the contributions of the women in our congregation. Join us at all 3 services, and enter Thanksgiving week renewed. Please contact Sue

Wedemeyer at 526-9411 if you can help on this day I will tell you what I need. Thank you.

**INTERFACE ITEMS NEEDED...**the following items are needed by the Battered Women’s

Shelter: STANDARD SIZES PLEASE of Shampoo & Conditioner, hairbrushes , combs, body lotion,

toothpaste, toothbrush , deodorant, tampons, disposable razors  and pocket size Kleenex . You

may bring this items and place them in the narthex please identify them on the outside of the bag

“INTERFACE” or you may drop items off at the church office. If you have any questions please call Jennifer Wacenske 581-2923 or the church office ☺



# School News

## Good Shepherd Lutheran School

A Christian community challenging minds and nurturing hearts since 1979



Volume XXXI, Issue IV

[www.gsls-simi.com](http://www.gsls-simi.com)

November 2009

Eighth grade students washed cars all day on October 17 to raise money for their trip to Washington, D.C. in May. Thank you to all who supported them in their efforts.



## 2nd Annual Pastor Appreciation Day Held

Once again, Good Shepherd Lutheran School took the opportunity to publicly thank those who are entrusted to care for members of the church, our pastors. The worship service was led by Pastor Nancy Switzler and the student worship band was led by Mrs. Richard Ferrin.

During the worship service, students read a poem about pastors and presented them with a gift bag which included items like Post-It notes to help them remember their sermons and member's names, Tylenol for the aches and pains they get from carrying everyone's burdens, and a bag of nuts to remind them of their congregation that loves them.

When is the last time you have thanked your pastor. Appreciate a pastor today.

## GRADE 7 TO CATALINA

Once again, the seventh grade spent October 19-23 at the Catalina Island Marine Institute. This program has been a positive learning experience at Good Shepherd for over 20 years.

While learning about marine life and the local habitat on the island, students also have a chance to marvel at the wonders of God's creation. It is easy to marvel at this in October on Catalina Island..

## FALL TESTING CONCLUDES

In order to better teach our students, Good Shepherd Lutheran School has moved standardized testing to the fall. Fall testing allows teachers the best opportunity to diagnose student's strengths, weaknesses, and learning styles, and in turn, apply this information

to adjust instructional methods and curriculum. As Good Shepherd continues to move closer to a differentiated learning model (meaning we teach to reach all students), fall assessment becomes vitally important.

## Other News and Notes

### JOINT COUNCIL MEETING

The Annual Joint Council Meeting is set for Tuesday, November 3, 6:00 p.m., in Eichele Hall at the Shepherd of the Valley campus. A time for dinner and fellowship will be a part of this evening.

### REPORT CARD CONFERENCES

The first parent-teacher conferences of the 2009-2010 school year will be held on the Trinity campus November 5 and 6.

### DINNER FUNDRAISER

Please come to the next dinner fundraiser at Island's on Monday, November 9. We look forward to seeing you there.

### VETERAN'S DAY

In honor of Veteran's Day, school and school-age care will be closed on Wednesday, November 11.

### THANKSGIVING BREAK

School will be closed November 23-27. Teachers will be attending the Lutheran Education Conference in Palm Desert the first part of the week. Thursday and Friday are off due to Thanksgiving holiday. School-age care will be open November 24-26.

### FIELD HOCKEY CLASSES OFFERED

Field hockey classes are being held every Friday on both campuses for all students, K-8. These classes teach students the basics of the game. Volunteers from the United States Field Hockey Association teach the classes.



# Happy

# Thanksgiving



## SUNDAY SCHOOL NOVEMBER NEWS

Sunday School for grades K-8 meet at 9:45 am in the upstairs classrooms: grades K-5 meet in the upstairs classrooms, grades 6-8 meet in the youth room. Children return to church after the sermon so they can commune with their families. Contact Lisa Lewis (527-6379) for grades K-5, or Angela Hess (526-3731) or Allison Graybill (583-1209) for grades 6-8.

In November, Sunday School will be doing two different collections for people in need in Simi Valley :

November Offerings to Still Water Café: The Still Water Café is a ministry our church started this fall. Each Thursday evening from 5-7 pm, a community dinner is served in Eichele Hall. Anyone is welcome. Tutoring is also available for school age children. If you are available, please come have dinner on Thursdays. Just come! Also, if you're interested in volunteering on Thursdays there are people on the patio on Sundays with sign ups. In November, our Sunday School offering will be donated to the Café to buy food.

Care & Share Donations: Because of the down turn of the economy, Care & Share (our local food bank) has seen increase in clients from 500 last year to 1500 this year! They're in need of donations. If you're able, please bring in a non-perishable item to Sunday School. We'll have boxes in the classrooms. They're especially in need of: canned yams, canned cranberries, canned vegetables, napkins, boxed potatoes, boxed rice, and boxed pudding.

BIRTHDAY PENNIES (Grades K-5 only.): We still recognize birthdays at the beginning of each class. If your child's birthday occurs during the week, have them bring the number of pennies of their age to church.

Grades 3-5: BRING YOUR BIBLES: Students in grades 3-5 should bring their bible to Sunday School each week & receive a treat. *Students in third grade will receive their own bible from the congregation on November 1<sup>st</sup> at the 9:45 service.*

### Lesson Schedule:

Nov 1: "Jesus Heals the 10 Lepers" (K-2 Drama, 3-5 Thank You Cards)

Nov 7: "The Widow's Mite" (K-2 Music, 3-5 Games)

Nov 15: "The Widow's Mite" (K-2 Games, 3-5 Art)

Nov 22: "The Widow's Mite" (K-2 Art, 3-5 Music); Grades 6-8 No Sunday School (Middle School Gathering)

Nov 29: No Sunday School (Thanksgiving Weekend)

Dec 6, 13 : Advent/Christmas

Dec 20: Christmas Party for grades K-8

Dec 27, Jan 3: No Sunday School

Jan 10, 17 , 24: "The Call of Moses"

Jan 31: No Sunday School (SVLC Annual Meeting, only one service at 9:45 am)



## **NOVEMBER Care and Share**

Care and Share has seen a large increase over the past year from 500 clients to now 1,500. **Can you help? Yes, please consider donating the following items:**

- Canned Yams
- Canned Cranberries
- Canned vegetables
- Napkins
- Boxed Potatoes
- Boxed rice
- Boxed pudding

Please bring on Sunday and place in the narthex or feel free to drop by the office during the week ☺



# November 2009

<i>Sun</i>	<i>Mon</i>	<i>Tue</i>	<i>Wed</i>	<i>Thu</i>	<i>Fri</i>	<i>Sat</i>
<b>1</b> <i>All Saints Day</i> 8:30-Worship 9:45-Rejoice 11:00-Worship 12:00-First Communion Class 1:00-NA 7:00-Al-anon-CR	<b>2</b> 6:00-Stretch N Tone 7:00-BSA #698-Hall 7:00-Al-anon-CR 7:30-Al-ateen-SAC	<b>3</b> 10:00-SVLC @ Luther's Attic 3:00-GSA#340-Hall 6:00-Stretch N Tone 6:30-BSA#622-Hall 7:00-Joint Council	<b>4.</b> 9:00-GSLS Chapel 3:00-GSLS Bake 7:00-Youth Group 7:00-Confirmation	<b>5</b> 10:00-SVLC @ Luther's Attic 3:00-Still Waters Café 6:00-Stretch N Tone 6:30-Al-anon-CR 7:00-SVCC-Sanct.	<b>6</b> 6:30-Pack #3643-PR 7:30-Sat. PADS  <i>Pastor Gary Off</i>	<b>7</b> 10:00-AA-CR 5:30-Simi Valley Christian Church
<b>8</b> 8:30-Worship 9:45-Rejoice 11:00-Worship 11:00-Women's Bd. 12:00-First Communion Class 1:00-NA 7:00-Al-anon-CR	<b>9</b> 6:00-Stretch N Tone 7:00-BSA #698-Hall 7:00-Al-anon-CR 7:30-Al-ateen-SAC 7:00-Worship Mtg.	<b>10</b> <i>Martin Luther's Birthday</i> ☺ 10:00-SVLC @ Attic 3:00-GSA #34-Hall 5:30-GSA#665-PR 6:00-Stretch N Tone 6:30-BSA#622-Hall 7:00-SVLC Council	<b>11</b> <i>Veteran's Day</i> GSLS CLOSED 7:00-Youth Group 7:00-Confirmation	<b>12</b> 9:00-Preschool Chapel 9:30-Naomi-Vicki Carey 3:00-Still Waters Café 6:00-Stretch N Tone 6:30-Al-anon-CR	<b>13</b> 3:00-GSA#34-Hall 7:00- Sat. - PADS  <i>PASTOR OFF</i>	<b>14</b> 10:00-AA-CR 10:00-SVLC @ Luther's Attic 5:30-Simi Valley Christian Church
<b>15</b> 8:30-Worship 9:45-Rejoice 11:00-Worship 1:00-NA 7:00-Al-anon-CR	<b>16</b> 6:00-Stretch N Tone 7:00-BSA #698-Hall 7:00-Al-anon-CR 7:30-Al-ateen-SAC	<b>17</b> 10:00-SVLC @ Luther's Attic 3:00-GSA#340-Hall 5:30-GSA#665-PR 6:00-Stretch N Tone 6:30-BSA#622-Hall 7:00-Happy Sq.- CR 7:00-Hannah Circle 7:00-Men's Group-IHOP	<b>18</b> 9:00-GSLS Chapel 7:00-Youth Group 7:00-Confirmation	<b>19</b> 10:00-SVLC @ Luther's Attic 11:30-Y.I.M.A.H. 3:00-Still Waters Café-Hall 6:00-Stretch N Tone 6:30-Al-anon-CR 7:00-GSLS Bd. Mtg.	<b>20</b> Middle School Youth Gathering Woodland Hills 7:30-Sat.- PADS  <i>PASTOR OFF</i>	<b>21</b> 10:00-AA-CR 5:30-Simi Valley Christian Church
<b>22</b> <i>SVLC Qtr. Mtg. Thank Offering</i> 8:30-Worship 9:45-Rejoice 11:00-Worship 1:00-NA 7:00-Al-anon-CR	<b>23</b> GSLS CLOSED 6:00-Stretch N Tone 7:00-BSA #698-Hall 7:00-Al-anon-CR 7:30-Al-ateen-SAC	<b>24</b> 10:00-SVLC @ Luther's Attic 3:00-GSA#34-Hall 6:00-Stretch N Tone 6:30-BSA #622-Hall 7:00-Property Mtg.	<b>25</b> 9:00-GSLS Chapel 7:00-Youth Group 7:00-Worship/ Pie Social	<b>26</b> <i>Happy Thanksgiving</i> GSLS CLOSED 3:00-Still Waters Café-Hall	<b>27</b> 7:30-Sat. - PADS  <i>PASTOR OFF</i>	<b>28</b> 10:00-AA-CR 5:30-Simi Valley Christian Church
<b>29</b> 8:30-Worship 9:45-Rejoice 11:00-Worship 12:00-First Communion Class 1:00-NA 6:30-Pack3643-PR 7:00-Al-anon-CR	<b>30</b> 6:00-Stretch N Tone 7:00-BSA #698-Hall 7:00-Al-anon-CR 7:30-Al-ateen-SAC					