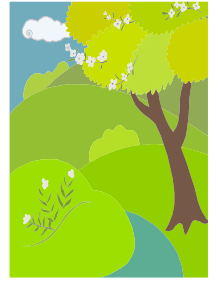


Seek the Lord, Study God's Word, Serve the World

Serving the community...

## Still Waters Cafe



“A **no cost** dining service to those who are suffering economic hardship, homelessness or who are lonely and wish to have a dining companion”

Amenities at the café:

- **Mealtime is 5:00–7:00 p.m. every Thursday**
- Fresh home cooked meal served in a family atmosphere with home style table settings.
- To go snack bags are offered.
- Highchairs and booster seats are available for the younger family members.
- There are wheelchair accessible entrances and bathrooms available.
- Prayer requests can be satisfied.
- Homework help is available for school age children  
K-8<sup>th</sup> grade 3:30 – 5:00 p.m. and includes a snack.

**For further information please call 805-526-7577**

### **PRAYERS NEEDED:**

**WE CONTINUE TO PRAY FOR AMERICA, THOSE FIGHTING IN FOREIGN LANDS AND FOR THE CONTINUED STRENGTH OF THE LEADERS OF THIS GREAT NATION**

**Our Military Personnel now serving:** John Parker, Shane Denning, Tyson and Blake Crosby, Joe Anderson, Mike Hultman, Brian Lowen, Nick Goldsmith, Brian Richardson, Frank King, Michael Kidd, Nisha Dean, Dan Balaun, Chris Labelle, Raymond Schooler, Captain Ted Slocum, David Bond, Wayne Combs, Jeffrey C.A. Bower, Jonathan Scholberg, Brett Launer, Jorden Gutowski, Allen Steinke, Robert Deobler, Sgt Elliott Van Marion, Matthew Wilkins, Cpl. Brett Tyre, Travis Girard, Richard Deobler.



***Dear Friends and Family, if there are friends and loved ones whom you would like to have prayers for, or military persons on active duty, please contact the church office at 526-7577 and we will list them in our bulletin and newsletter.***

**REMEMBER IN PRAYER** ..... Pastor Gary and our church leaders...

**Undergoing cancer therapy** Daryl Barnett, Julie Rolph (*friend of Jan Yoder*), Gary Lee Boswell (son of *Gloria Holst*). Michael Merilar (*son-in-law of John Yanuklis*), Craig Wells.

**Under convalescent or hospice care**... Tommy Timms (cousin of Jeanne Fisher) Hazel Gade (SVLC member), Tim Simpson (Min Simpson's son).

**Undergoing surgery, various tests, treatments, recuperating and continued comfort**...

Elsie Pusateri, Mike Moriarty, Kristofer Maass (*friend of the Baas family*), Kenny Kotwitz, to regain some vision, John Yanuklis, Pr. Kenn Bergmann, Sammi Brazenor, Lydia Christensen; Eloise Cooley (*Marcia's mother*), Good Shepherd Lutheran School, Pastor Leslie Soyster, Laurie Kephart (*John Yanuklis' daughter*), Millie McDermott (*Mary Kotwitz' mother*), Margie Schuelke (*Mary Kotwitz' aunt*), Kelly Stemler (*Carol Howard's daughter*), Irene Tangren's daughter, Debbie, Pr. Paul Werfelmann, John Yankulis Jr. (*son of John Yankulis*), Diana Anderson (*Carol Jackson's sister*) Florence Huff (*Carol Jackson's mother*), Katie Corrigan, Ron Schultze family, Connie-Kieffer-Collins.

### **HOMELESS? IN SIMI VALLEY?**

The County of Ventura 2009 Homeless count has been updated. The total number of persons counted in Simi Valley was 303. There were 266 adults and 37 children. A breakdown of the data collected from adults is as follows:

- 1. Location** 98% of persons (298) were counted on the streets and 2% (5) in facilities;
- 2. Age** 5% of adults (12) were seniors (age 62+); 18% (48) were youth between the ages of 18 – 24; and 4 (1%) were unaccompanied youth (without parents) between the ages of 13-17.
- 3. Gender** 69% of adults (183) were men and 31% (83) were women;
- 4. Ethnicity** 69% of adults (183) were White; 23% (62) were Hispanic or Latino; 1% (2) were American Indian or Alaskan Native; 3% (8) were African American or Black; 1% (3) were Asian/Pacific Islander; and 3% (8) stated Other;
- 5. State Born** 67% of adults (178) were born in California;
- 6. Children** 12% (37) of the total number of persons counted were children;
- 7. Family Composition** 18 families were counted—10 two-parent family with children and 8 one-parent families with children. 20% of the homeless in Ventura County call Simi Valley “home”. “Lord, when did we see you hungry and homeless and invite you in?”



Dear Fellow Pilgrims,

A lot has been made during the last few years about the lack of leadership in our world. Perhaps you have heard the lament there is a lack of true leaders in the world; whether in the world of business, the world of politics, and even the world of religion. In some ways I agree. Sometimes in the business world it seems a CEO from one faltering corporation is spirited away to take the helm of another faltering corporation, in hopes of bringing prosperity and stability to the new corporation. Is the talent pool in the business world that shallow? There are times in politics it seems we do the same, much like a game of musical chairs. Politicians move from one office to another always promising a better tomorrow yet never being able to deliver enough of the goods to satisfy enough of the people. The only way the game ends for some politicians is when the music stops and a politician dies or is caught in a scandal too big to be explained away. Is this simply another method of recycling?

Regarding the world of religion, it seems we are always looking for the next great fad to which we can hitch our horse or else look to the past to a horse that once got us to a spot where we were comfortable (at least that's the way we remember it) and continue to prop up the horse, even though it has long since gone lame or died. Too often we look for answers in Golden Age that never was.

The laments about the leadership vacuum in our world are widespread and loud. In some ways, I don't understand why anyone would want to take on a leadership role. It seems at times instead of a leader what we really want is a scapegoat, one on whom we can cast all our shortcomings and mistakes before we send it off to be killed, so we don't need to feel badly about ourselves.

I would like to offer an idea that instead of a leadership vacuum what we really have is a followership vacuum. I think there are plenty of leaders out there. Perhaps there are too many of them. The problem is, however, that with so many different leaders it becomes difficult for us to decide on which leader to pin our hopes or we become confused with all the promises that are made and what we truly want and/or believe about the truth. Besides, what many of the leaders offer are things that are not truly life-giving or life-affirming. They are much like the apple that appears nice and shiny red on the outside, but beyond the skin on the inside hides a worm filled rotten core.

Jesus calls to us through the ages, "Follow me." But do we still know how to follow? And, if we think about it, do we like the way Jesus describes what it means to follow? Throughout the ages I believe there have been those in the church that have tried to lessen the expectations of what it means to follow Jesus and in the end have turned it from a radical, life-changing path that leads to a better world for all, to a comfortable path that leads much of no where and has no power to change much of anything.

Are we willing to wrestle with what it means to truly be a follower, or will we discover the road too rough and sadly turn away? Or will we continue to seek our own comfort and security and wield none of the power that comes with truly following Jesus? That's a wrestling match I would pay to see because it could potentially spell the end to the lack of true followership.

Your Partner in Wrestling,  
Pastor Gary

# RELAY FOR LIFE



Relay will be October 23 & 24, 2010 at Royal High School. Relay for Life is the American Cancer Society's signature event. It is a 24 hour team event that raises awareness of cancer in the community and raises funds to fight cancer. Throughout the event, Relay for Life teams commit to keeping at least one member walking the track...because cancer never sleeps.

Cancer also knows no race, gender or age. Anyone may walk, from the young to the old. If you would like to join our team you can register at [www.main.acsevents.org/goto/sov](http://www.main.acsevents.org/goto/sov) If you are interested in sponsoring one of our walkers or have any questions please contact me. Julie Honda at 341-3866 or email at [R6Hondas@Roadrunner.com](mailto:R6Hondas@Roadrunner.com)

# SVLC PRESCHOOL Summer News



*Summer session has arrived, and this year as always we have lots of fun activities planned for July. Some of our themes include:*

*"red, white and blue"*



*"get up and move"*



*"let's go camping"*



*And...*

*"splish splash"*



*We are currently registering children for fall. We are licensed to serve families that have children between the ages of 2 years 9 months through 5 years of age. We believe that each child deserves the opportunity to grow and develop in a safe, loving environment and stimulating Christian environment. Children are treated with warmth and respect, and learn to appreciate their value and importance in God's world. Our goals are to help children grow in their sense of self-worth, to recognize their strengths and abilities, and to develop physically, intellectually, emotionally and spiritually.*

*Call the preschool at 526-9069 for more information.*

## SCRIP SUGGESTIONS

Once again we honor our mothers and grandmothers for always caring about and loving us no matter our age. While our children are busy making their handmade gifts for us to cherish, our husbands and significant others are struggling to decide what to get us. Well, we at the Scrip table, can be of incalculable assistance!

Some of the most popular gifts are flowers, jewelry, perfumes, candy, or clothing. And guess what? We have gift cards to cover all of those. All you have to do is tell us what you need and we will be more than happy to order the cards for you and have them ready to pickup in about a week.

Maybe you want to take the little lady to the theater, or out to dinner. We can help you there as well. Planning a family party? Get everything you need at Von's, Albertson's or Ralphs.

I know it is disappointing to find that we may not have the exact store you want to use on hand. But since we have about 100 possible shops on our list, it is not feasible for us to have them all on hand all the time. We do keep the most popular ones available at all times. But, as I said, we are most happy to order whatever your little heart desires and it will arrive in about a week for you to pick up.

We are here to be of service in any way possible. Every purchase you make, returns a portion to the church. It is such a simple and painless way to increase your giving. So see us at the SCRIP table on Sunday.

## LIBRARY NEWS

Ladies! Have you ever thought about how many names you niece, aunt, granddaughter, friend. But the most important you are a mother or have a mother, whether you are a grandmother, helping to raise a child is the most have.

And the job comes without any training. Mostly it is are books that might help. Check out our book cart for think you are doing a great job, it never hurts to see your job easier and better.

Probably the most important gift you can give a child, spend time with him/her. Reading to your children is one of the most enjoyable ways you can interact with them. Check our book cart for a wide selection of books geared to all ages and take them home to enjoy with your family.

Remember to return any books within 2 weeks. If you enjoyed reading them, so will others. Remember to share. The book cart is always on the patio on Sunday morning for your convenience.



have? Daughter, sister, cousin, name is MOTHER. Whether granddaughter or a important job you will ever

trial and error. Luckily, there books on parenting. Even if you what ideas are out there to make

child is love. Unconditional love. Listen to your





# School News

## Good Shepherd Lutheran School

A Christian community challenging minds and nurturing hearts since 1979



Volume XXXI, Issue XI

[www.gsls-simi.com](http://www.gsls-simi.com)

July 2010

### MISSIONAL LUTHERAN EDUCATION

To get to the heart of missional education, one must start at the heart of God, the heart of the Gospel. Jesus's purpose for coming into our world was to seek and to save the lost. *"For the Son of Man came to seek and to save what was lost."* (Luke 19:10) So, then, our mission is not about budget or buildings, our mission is about people. Sure, we need to be practical about budgets and buildings, but we cannot let them define our outreach.

Lutheran schools are the largest Protestant school system in our country. In our schools, over half of the students are unchurched giving us a chance to spread the Gospel. The other part of this is that in our Lutheran educational system, not only are students taught about the faith, they are taught how to share the faith. Our Spirit-inspired goal is to make disciples who can make disciples.

Robert Newton, California-Nevada-Hawaii LCMS District President, recently said, "One of the last bridges remaining between our church and the unchurched in the post-church era is the education of children. Here is where our Lutheran schools, preschools, and early childhood education centers continue to serve as critical mission posts in our communities."

Terry Schmidt, another

church leader, is quoted as saying, "Care and compassion are the hallmarks of Lutheran schools. Christian service is what makes us different . . . Lutheran schools are caring for and serving children first. They are family-centered and are intentionally reaching out into their communities with the love of God."

Support your local Lutheran schools with prayers, talents, and treasure. Just as you support other worthy ministries, take time to support the gift of Christian education your churches share with the community through their preschools and elementary day school.



**"For we are  
God's masterpiece.  
He has created us  
anew in Christ Jesus,  
so we can do  
the good  
things He  
planned for  
us to do  
long ago."  
Ephesians 2:10**



**WHO WE ARE MAKES A  
DIFFERENCE.**

#### GRADUATIONS

Both kindergarten and eighth grade held graduations on Tuesday, June 8. Pictured above are some of our eighth grade graduates, below, kindergarten grads.

#### EIGHTH GRADE CLASS AWARDS

Emily Radtke, Shepherd of the Valley, and Erin Scuoler were named 2010 class co-valedictorians at Good Shepherd this year. Keats Willis was named class salutatorian. These young women delivered speeches at the graduation ceremony on June 8.

### News and Notes

#### FINANCIAL ASSISTANCE PROGRAM AVAILABLE

The School Board is committed to the idea that any family wishing to give their child a Christian education should be able to do so. Call for information on how to apply for financial assistance.

#### REGISTER NOW FOR 2010-2011

Registrations are still being accepted for the 2010-2011 school year. Call the school office, 526-2482.

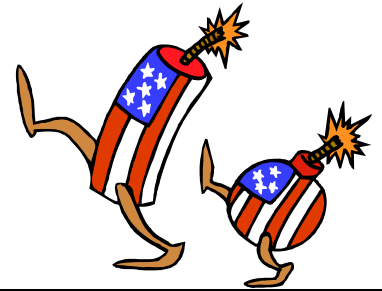
#### SUMMER OFFICE HOURS

Beginning July 6, office hours will be 8-12, Monday thru Thursday.



**ON SALE NOW...** Good Shepherd Lutheran School hard bound Cookbooks are on sale in the church office they make a great gift anytime of the year. The cookbooks are loaded with recipes from family members of the students. Drop by anytime and pick yours up for a mere \$20. Proceeds are to fund the school to keep Lutheran education available in Simi Valley.

# July 2010



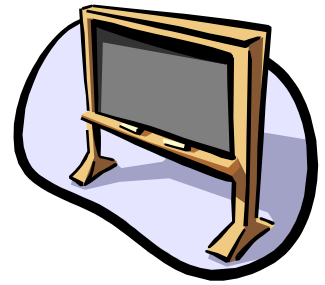
<i>Sun</i>	<i>Mon</i>	<i>Tue</i>	<i>Wed</i>	<i>Thu</i>	<i>Fri</i>	<i>Sat</i>
				<b>1</b> 10:00-SVLC@Attic 3:00-SWC (Team 1) 6:00-Stretch N Tone 6:30-Al-anon-CR	<b>2</b>  <i>Pastor off</i> <i>Lauren off</i>	<b>3</b> 10:00-SVLC @ Attic 10:00-AA-CR  5:30-Simi Valley Christian Church
<b>4</b> 8:30-Worship 9:45-Worship 11:00-Worship 1:00-NA 7:00-Al-anon-CR	<b>5</b> 6:00-Stretch N Tone 7:00-BSA #698-Hall 7:00-Al-anon-CR 7:30-Al-ateen-SAC	<b>6</b> 10:00 SVLC @Attic 6:00-Stretch N Tone	<b>7</b> 7:00-Youth -YR	<b>8</b> 9:30-Naomi 10:00-SVLC@Attic 3:00-SWC (Team 2) 6:00-Stretch N Tone 6:30-Al-anon-CR	<b>9</b>  <i>Pastor off</i> <i>Lauren off</i>	<b>10</b> 10:00-AA-CR  3:00-Hall in Use 5:30-Simi Valley Christian Church
<b>11</b> 8:30-Worship 9:45-Rejoice 11:00-Worship 1:00-NA 7:00-Al-anon-CR	<b>12</b> 6:00-Stretch N Tone 7:00-BSA #698-Hall 7:00-Al-anon-CR 7:30-Al-ateen-SAC	<b>13</b> 10:00-SVLC@Attic 6:00-Stretch N Tone 7:00-SVLC Council	<b>14</b> 7:00- Youth - YR	<b>15</b> 10:00-SVLC @Attic 3:00-SWC-Hall 5:00-SWC-(Team 3) 6:00-Stretch N Tone 6:30-Al-anon-CR	<b>16</b>  <i>Pastor off</i> <i>Lauren off</i>	<b>17</b> 10:00-AA-CR  5:30-Simi Valley Christian Church
<b>18</b> 8:30-Worship 9:45-Rejoice 11:00-Blended 1:00-NA 7:00-Al-anon-CR	<b>19</b> 6:00-Stretch N Tone 7:00-BSA #698-Hall 7:00-Al-anon-CR 7:30-Al-ateen-SAC	<b>20</b> 10:00-SVLC@ Attic 6:00-Stretch N Tone 7:00-Hannah 7:00- Men's Group @ HomeTown	<b>21</b> 7:00-Youth -YR	<b>22</b> 10:00-SVLC @ Luther's Attic 3:00-SWC-(Team 4) 6:00-Stretch N Tone 6:30-Al-anon-CR	<b>23</b>  <i>Pastor off</i> <i>Lauren off</i>	<b>24</b> 10:00-AA-CR  5:30-Simi Valley Christian Church
<b>25</b> SVLC Quarterly Mtg. <b>9:45 Bluegrass Worship ONLY</b> 1:00-NA 7:00-Al-anon-CR	<b>26</b> 6:00-Stretch N Tone 7:00-BSA #698-Hall 7:00-Al-anon-CR 7:30-Al-ateen-SAC	<b>27</b> 10:00 SVLC @Attic 6:00-Stretch N Tone 7:00-Property Mtg. Library	<b>28</b> 7:00- Youth -YR	<b>29</b> 10:00-SVLC @Attic  3:00-SWC-(Team 5) 6:00-Stretch N Tone 6:30-Al-anon-CR	<b>30</b>  <i>Pastor off</i> <i>Lauren off</i>	<b>31</b> 10:00-AA-CR  5:30-Simi Valley Christian Church



## Eyeglass Ministry

We are happy to report that 36 used eyeglasses have been donated for use by those unable to afford to pay for their own. All of us who wear glasses, are keenly aware of how necessary they are. Without them, we might not be able to find work, drive a car or live a normal life. Many thanks to those who so generously give to the less fortunate. You are a special blessing to many. Remember, this is an ongoing ministry so continue to bring in your old glasses when you get new ones. Just leave them in the narthex., give them to the Scrip people, or drop them off in the office. They will be greatly appreciated.

# Youth News!



Please be sure to stop by the Youth Board Sundays after service to see sign up for upcoming events.

Some events I would like to highlight:

**July:**

- 5-10-Elementary/Middle School: Camp (Lauren’s Week)
- 18-23-Elementary/Middle School: Camp (Pastor Gary’s Week)
- 29-Elementary/Middle School: Roller Dome
- 30-31-High School: Cosmic Bowling/Lock-in

**August:**

- 2-6-Elementary: Day Camp/VBS
- 4-High School: Samaritan Center
- 8-All Ages: Ice Cream Sunday
- 15-High School: Beach Day
- 18-Elementary/Middle School: Game/Relay Day

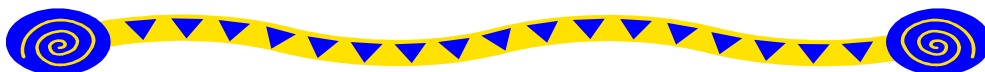


Any students who have a Facebook profile are encouraged to join the group “SVLC Youth-Simi”, this will provide up-to-date youth news and events straight to your computer!!

\*The youth are also collecting have any glass, plastic or aluminum that



recyclables in our bins upstairs, if you you can bring by, that’d be great!!\*



**SHEPHERD OF THE VALLEY LUTHERAN CHURCH**  
4191 Cochran St, Simi Valley, CA 93063 805.526.7577

## **VACATION BIBLE SCHOOL/DAY CAMP!!**

### **August 2-6, 9am-3pm – Grades K-8**

*For the creation waits with eager longing for the revealing of the children of God. – Romans 8:19*

VBS will again be led by camp counselors from El Camino Pines Lutheran Camp. It’s a wonderful program including crafts, bible studies, games, and much more! Snacks and lunch\* are provided.

\*Lunch for full day program only.

*“It’s like having summer camp without leaving town.”*

VBS is for everyone entering grades K through Grade 8 in the fall.  
Registration donation: \$50 half day (ends at noon) / \$100 full day program.

~~Make checks payable to SVLC~~

Return this form to the church office or the offering plate.

-----

Name: \_\_\_\_\_

Birthday: \_\_\_\_\_ Grade entering in the fall: \_\_\_\_\_

Allergies or medical concerns: \_\_\_\_\_

Parents: \_\_\_\_\_

Address: \_\_\_\_\_ Zip code: \_\_\_\_\_

Home phone: \_\_\_\_\_ Work/cell phone: \_\_\_\_\_

Adult responsible for picking up child: \_\_\_\_\_

Emergency Contact: \_\_\_\_\_ Phone: \_\_\_\_\_

Home Church: \_\_\_\_\_ Email: \_\_\_\_\_