

# Welcome

to Shepherd of the  
Valley Lutheran Church

## August Newsletter

**You** are invited to share a *free* community meal with your neighbors every Thursday 5:00 p.m. at Still Waters Café located in Simi Valley at 4191 Cochran Street call 805-526-7577



**Still Waters Café** is looking for:

**volunteers** who are willing to commit to:

**one Thursday** a month from **4:45 p.m. – 7:00 p.m.**

There are many jobs that need to be done and now with summer approaching, our youth programs that volunteered are not in school. Jobs might include serving desserts, helping with dishes, being a runner, etc. If you are willing to commit to one Thursday a month, please contact Ray Valderrama at 527-4061 and your name will be put on the list.



*Dear Friends and Family, if there are friends and loved ones whom you would like to have prayers for, or military persons on active duty, please contact the church office at 526-7577 and we will list them in our bulletin and newsletter.*

### **REMEMBER IN PRAYER...**

Shepherd of the Valley Lutheran Preschool,  
Good Shepherd Lutheran School and our church leaders.

### **WE EXTEND OUR CHRISTIAN SYMPATHY TO**

Carol Bunn and family on the loss of her mother  
Rosemary Westfall.  
And to Cyd Mutal and family on the loss of her mother  
Doris MacDonald.  
Please keep both families in your prayers.



**CONGRATULATIONS TO** Bill Wilson on the birth of his granddaughter Mila Lise

**Undergoing cancer therapy** ... Craig Wells, Gary Lee Boswell (son of *Gloria Holst*),  
Willie Cornforth (*Allison Graybill's Aunt*) Shirley Stienke,  
Heinz Raaber (cousin of *Joanne Askew*) Carol Williams (*Al & Joanne Askew's daughter*)

**Under convalescent or hospice care...**

Tim Simpson (*Minn Simpson's son*) Rev. James Cherrill (*Cathie Badillo's uncle*), John Moore

**Undergoing surgery, various tests, treatments, recuperating and continued comfort...** Eloise Cooley (Marcia's Cooley's mother), Pastor Leslie Soyster, Ron Schultze family, Connie-Kieffer-Collins, June Goldberg, John Yanuklis, Becky Counts, Kent & Rosalie Fredrick, Jenny Kidd

### **Our Military Personnel now serving:**

Joe Anderson, Dan Balaun, David Bond, Jeffrey C.A. Bower, Wayne Combs,  
Tyson and Blake Crosby, Nisha Dean, Shane Denning, Richard Deobler, Robert Deobler,  
Travis Girard, Nick Goldsmith, Jordan Gutowski, Mike Hultman, Michael Kidd,  
Frank King, Chris Labelle, Brett Launer, Brian Lowen John Parker, Brian Richardson,  
Jonathan Scholberg, Raymond Schooler, Captain Ted Slocum, Allen Steinke  
Cpl. Brett Tyre, Sgt Elliott Van Marion, Thomas Weaver, Matthew Wilkins



*Thank you for your service*



My Dear Fellow Pilgrims,

Not long ago, one of our members, who is quite an accomplished archer, showed me a picture of her most recent attempts with bow and arrows. She had done very well, with a picture showing all the arrows either in or near the center of the bull's eye. My own archery accomplishments pale in comparison to the skills demonstrated by this individual. In reality, the only way I could come close to the center of the bull's eye would be to first shoot the arrow and then draw the bull's eye around where the arrow landed.



In the original Greek of the New Testament, the word used for “sin” is an archery term that means “missing the mark.” That’s an interesting definition of “sin” – in God’s goodness and love God has established “the mark, what it means to live God’s way. Any attempt to live God’s way then that falls short of the bull’s eye and misses the mark is therefore a sin. That’s an interesting concept.

Through Jesus God has indeed set the bar high in Jesus’ example of Godly living. The basis of Jesus example is, of course, love -- love of God and love of neighbor. Yet as simple as that sounds in theory, in practice it is incredibly challenging. Often we fail, we miss the mark, we sin. Instead After awhile, instead of trying to hit the bulls eye we may give up in frustration and simply lower the bar of expectations by drawing the bulls eye around wherever our attempts take us. Yes, it is far easier to lower the bar than to take an honest look at ourselves and try to adapt our lives to be more like Jesus. When we do this it may make us feel better about our selves, but it is still a sin.

The good news is that there is forgiveness. Even when our attempts fall short and we try to change the rules or reset the bar, God forgives us and invites us to try again.

Will we ever get it right? Yes, but never 100% of the time. Hitting the mark by truly loving and forgiving others as we have been loved and forgiven feels great. Knowing there is forgiveness and opportunity to try again when we fail is priceless.

Your partner in Ministry,  
Pastor Gary

*Pastor Gary will be out of the office from Monday, Aug. 1<sup>st</sup> – Sunday, Aug. 21<sup>st</sup>*

---

## **NEW MEMBER CLASS**

Beginning Sunday  
Sept. 25<sup>th</sup> and Sept. 2<sup>nd</sup> & 9<sup>th</sup>  
12:00 noon



If you are interested in becoming a member at Shepherd of the Valley, or just in learning more about our faith, the new member class is the place to be ☺ Please, RSVP by Sept. 18<sup>th</sup> by calling the church office 805-526-7577 or speak to Pastor Gary ☺

# Words For Women



A Newsletter for the Women and Friends of  
Shepherd of the Valley Lutheran Church

\*\*\*\*\*

Thank you to everyone who attended our bake sale on June 5<sup>th</sup>. Thank you to all the bakers who brought an amazing amount of goodies for us to sell. Because of your generosity, we were able to raise \$500.00 towards the tornado relief effort through Lutheran World Relief. Well hang on to your hats..... The Endowment Committee not only matched us dollar for dollar, they matched us \$10.00 for every dollar raised. We are sending a check for \$5,500.00.

We thank you so much Endowment Committee Members. You have blessed many people with your gift of love.

We had a wonderful time at the Ten Things Party. Thank you to all the ladies who attended. We had great appetizers and went home with some cool items.



## Upcoming Events

Summer Bible Study, July 16<sup>th</sup>

This year's study will be held at the home of Caroline Nell from 11:30 am to 1:30 pm. Our study leader will be Sue Wedemeyer. We will also be having a potluck so please bring a salad to share. Caroline's address and phone are: 2833 Ocie Ave, Simi Valley 805-522-3817.

Hope to see you there!

Mark your calendars for October 9, 2011. We're having a fashion show. Don't be surprised if you see one of our Super Models sitting next to you church. If you are interested in helping, please contact Judy Nichols.



If you would like to be on our e-list, please email [Lisagearthart@sbcglobal.net](mailto:Lisagearthart@sbcglobal.net). We'll make sure your name gets added.

---

# SPARK

## Summer News

*Spark is for all youth entering Grades 4 through 8.*

*We meet in the upstairs SAC room every Wed. 7 - 8:15 p.m.*

*Please join us for fellowship and games. It is a relaxed and fun evening.*

*Come on and join us! Stay tuned for upcoming movie night and bowling night.*



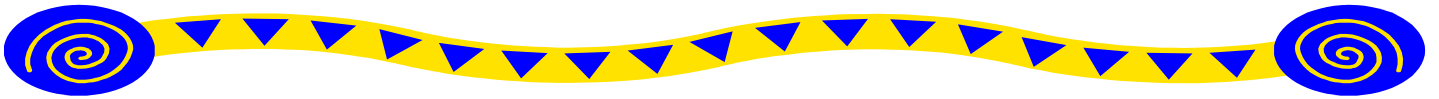
Relay will be October 15 &16, 2011 at Rancho Simi Community Park. Relay for Life is the American Cancer Society's signature event. It is a 24 hour team event that raises awareness of cancer in the community and raises funds to fight cancer. Throughout the event, Relay for Life teams

commit to keeping at least one member walking the track . . . because cancer never sleeps. Cancer also knows no race, gender or age. Anyone may walk, from the young to the old. If you would like to join our team you can register at [www.main.acsevents.org/goto/shepherd](http://www.main.acsevents.org/goto/shepherd). If you are interested in sponsoring one of our walkers you may also do that at our website

[www.main.acsevents.org/goto/shepherd](http://www.main.acsevents.org/goto/shepherd). If you have any questions please contact me.

**Julie Honda 341-3866** [R6Hondas@roadrunner.com](mailto:R6Hondas@roadrunner.com)

Website [www.main.acsevents.org/goto/Shepherd](http://www.main.acsevents.org/goto/Shepherd)



## *Samaritan Center of Simi Valley*

Shepherd of the Valley Lutheran Church

Serves a meal to the less fortunate at the

*Samaritan Center* – located on Royal Ave.

The **1<sup>st</sup> Wednesday of every month from 4:00-6:00 p.m.**

This is a church service project and **we need help.**

We need volunteers to do the following: buy and deliver food to the Samaritan Center, serve food **or** donate money.

If you would like to help, please contact Yvonne Baird at 584-2521.

Thank you for your prayers and support for this important ministry.

## *Stamps – Stamps – Stamps...*

**On behalf of the Women's groups, and in support of various charities here in California as well as around the country, please save used postage stamps. You can leave them on the envelope or clip about 1/4 inch around the stamps, pop them in an envelope or baggie and drop them off in the narthex the next time you visit our pretty little church.**

**It's quick; it's easy, and it means a lot to the folks we help.**

## *Interface Ministry*

As an ongoing ministry of SVLC we collect items for personal care bags at the monthly Women's Circles, or by taking your donation to the Church office. These items then go into a care bag and are given to Interface for their Battered Women's Shelters throughout the county.

The items needed to make a care bag are (in regular sizes): Shampoo, Conditioner, Brush, Comb, Lotion, Toothbrush, Toothpaste, Soap, Deodorant, Tampons, Disposable Razors, Pocket Size Kleenex. In 2010 twenty bags were donated to Interface!

Individual size lotion, soap, shampoo etc. from motel/hotel stays are also appreciated as they are taken to the Samaritan Center for use. If you have any further questions regarding this ministry please contact Jennifer Wacenske @ 581-2923.







**Christ Caring for People through People** - That's the motto of Stephen Ministry.

The Stephen Minister's role is to bring God's love into the lives of people who are going through a difficult time or experiencing a crisis. What do Stephen Ministers do? They listen to you, care for you, support and encourage you, and pray with and for you. And in the midst of this confidential, one-to-one, caring relationship, God's healing love comes pouring through.

### **What you should know about Stephen Ministry**

Shepherd of the Valley has a system for training and organizing laypeople to provide one-to-one Christian care to hurting people in our congregation called **Stephen Ministry**. All Stephen Ministers receive 50 hours of training in care giving and attend continuing education classes every month that prepares them to listen and care for anyone going through a difficult time. The name Stephen comes from St. Stephen, who was the first layperson commissioned by the Apostles to provide caring ministry to those in need, (Acts 6).

Stephen Ministry began in 1975 when the Rev. Kenneth C. Haugk, Ph.D., a pastor and clinical psychologist, trained nine laypeople at his congregation in St. Louis to be **Stephen Ministers**. They assisted him in providing distinctively Christian care to members of the congregation and community. These trained caregivers were so enthused about their ministry; they encouraged Dr. Haugk to offer it to more congregations. Since that time more than 500,000 laypeople have been trained as **Stephen Ministers** in 50 states, 10 Canadian provinces and 24 other countries.

**If you or someone you know is facing a crisis--large or small--and could benefit from the caring presence of a Stephen Minister, call Pastor Gary at 805.526.7577.**

**Covenant Players**

*Once again we have the privilege to support  
The Covenant Players who will be on site from  
July 30<sup>th</sup> thru August 8<sup>th</sup> ☺*

*Please be sure to catch their weekly performances  
(free of charge) on Tuesday and Saturday evening  
beginning at 7:00 p.m.*



**celebrating 40 years**

## **Shepherd of the Valley Lutheran Preschool**

*"We believe that each child deserves the opportunity to grow and develop in a safe, loving and stimulating Christian environment. Children are treated with warmth and respect, and learn to appreciate their value and importance in god's world."*

We are continuing to build enrollment, and we do have room for more children. Call the preschool office at 526-9069 for more information, Thank you.

# SCRIP

It is never too early to start on back-to-school shopping. But before you do, stop by the Scrip table to pick up your gift cards so they are handy when you do.

Whether it is new school clothes, a backpack, pencils and paper, other school supplies or a new computer, one of our vendors has exactly what you need.

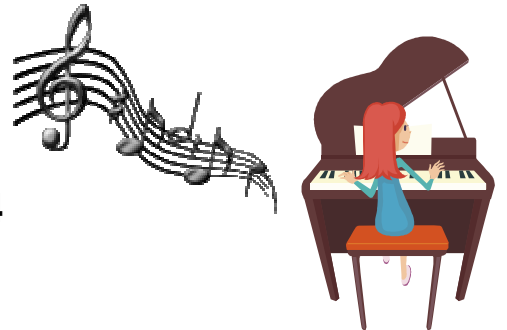
Wal-Mart, Staples, Barnes and Noble, Best Buy, Amazon.com, Target, Kohl's, Macy's, Radio Shack, Gap, Payless Shoes, Walgreen's, CVS, or Rite-Aid.

That is just a sample of the stores whose gift cards we carry. If we don't have it on hand, we will order it and have it for you the following Sunday. What more could you ask for?

You know you will be spending money to outfit your children for their upcoming new semester, so use our cards and benefit the church with a percentage of what you spend at no extra cost to you whatsoever! The merchant is happy to donate to your church whenever you purchase a gift card from us. What a simple way to increase your giving without having to pay a penny of it.

Talk about a win-win situation! You do your regular shopping, and the church receives money to help the needy. So - don't delay. See us at the Scrip table every Sunday between services. You will be glad you did.

Piano lessons with *Carol Jackson*  
reasonable prices - please call 805-822-7344



# Library



"It was a dark and stormy night...". So starts Snoopy's novel. Most of us cannot write one but we all enjoy reading them.

Did you know that your Library has a whole section devoted to paperback fiction? And it is a free book exchange whereby you can take any of those books home to read without having to return them. All we ask is that if you have finished a good novel of your own, that you donate it so others can have the pleasure of reading it as well.

As summer comes to a close, we are filling the book cart with novels of all genre. There is bound to be something for everyone. And not just adults, but children and teens as well. Come check us out. Summer is such a great time for recreational reading.

Don't forget that your Church Library also contains a lot of reading material to help live a Christian life in a secular world, something to deepen your faith and knowledge of the Bible, and answers for the troubling times in your life.

Feel free to browse our shelves and take advantage of what we have to offer. This is YOUR Library. Enjoy!



# News from Good Shepherd

**The Promise of a Lutheran School** – Lutheran schools promise:

- Academic excellence
- A balanced curriculum
- An exceptional faculty
- To show children how to serve others
- To support families as they raise their children

And all of this is done in a community grounded in a common faith in Jesus Christ. Give your child the gift of a Christian education at Good Shepherd Lutheran School, accredited by two respected national organizations, WASC and NLSA.

**2011-2012 Good Shepherd Registration** – Registration for the coming school year, 2010-2011, is open to all. Call the school office, 526-2482, for more information.

**Financial Assistance Program** – It is the conviction of the School Board of Good Shepherd Lutheran School that no child should be denied the privilege of a Christian education because of finances. If you have any questions about our generous financial assistance program, contact the school office, 526-2482, or e-mail us, [admin@gsls-simi.com](mailto:admin@gsls-simi.com).

**GSLs School Tours Available** – If anyone needs information about Good Shepherd Lutheran School, please call the school office, 526-2482. We will be happy to take you on a tour of our campuses and answer any questions you may have about our program.

## **PLEASE...HELP SUPPORT OUR SCHOOL**



**Luther's Attic...**a thrift store in

Moorpark at 189 High Street that helps support Good Shepherd Lutheran School.

Give donations, shop and/or **volunteer your time!!**

It all helps our Christian school ministry here in Simi Valley.

For further information call 805-523-7188.

The proceeds from the store are split between the three schools that receive financial support from the store. The financial split is based on volunteer hours submitted by members from each of the churches (the more volunteer hours from your church the stronger the financial support).

## SVLC ENDOWMENT FUND

Not too many people know what an Endowment Committee is or what it does.

Here at Shepherd of the Valley Lutheran Church in Simi Valley we have a great Endowment Committee. We don't just fund our church organizations, but we also help others in the community. Listed below are just some of the organizations that we have helped fund.

The following grant requests were funded last quarter:

SCHOLARSHIPS(2)	\$5,000.00
GOOD SHEPHERD LUTHERAN SCHOOL	\$2,000.00
COVENANT PLAYERS	\$ 500.00
FOR THE TROOPS	\$5,000.00
RTC ENTERTAINMENT INC.	\$4,000.00
POWER FOR YOUTH	\$5,000.00

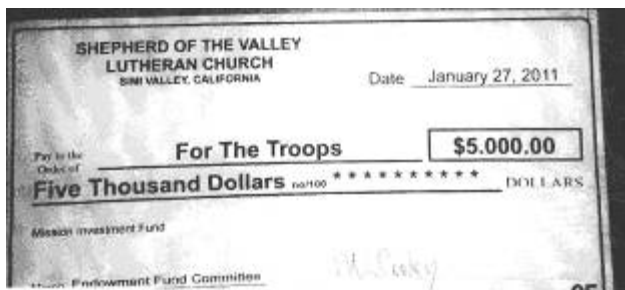
Each month we would like to let everyone know more about what the Endowment Committee does. This month we'd like you to know about FOR THE TROOPS (FTT).

FTT provides for mailing of care packages to our Troops in Afghanistan. FTT packages all year long. Last year it cost \$140,00.00 for postage alone. It cost approximately \$11,000.00 to mail 157 20" x 20" x 12" boxes. Each one of these boxes cost \$70.00 to ship. Each box contains 8 individual boxes containing much needed personal and necessary items lovingly boxed by caring volunteers. School children make cards and one is put into each box. The majority of the boxes have designated names on them given to, FTT from the Chaplains and Commanding Officers. Let's not forget the female soldiers. FTT packs special boxes for them too. The entire operation is run by volunteers. They have Shirley sewing neck coolers with Fran and Cindy ironing them and others putting in polymer. Dick Hodnefeld gave us a tour of the facilities. Dick and Gayle Hodnefeld are on the Advisory Board. Linda Curtis, Marv & Jenny Kidd are just some of the volunteers from Shepherd of the Valley Lutheran Church who lend a hand. There are as many as 15 to 17 people helping out on a daily basis. Thursdays are special because that's shipping day. There can be up to 25 or more people helping then.

Paula Cornell started mailing items to troops in 2005 and started FOR THE TROOPS in 2006 and Jaine Josephson came on board shortly thereafter.

The store front that is used has been donated by The Sycamore Village. This would cease to exist if it weren't for all the generous donations from individuals and organizations like Shepherd of the Valley Lutheran Church's Endowment Fund Committee. Please note that there is a TROOPS WISH LIST. Everything and anything is greatly appreciated. Especially cash donations! There are too many volunteers for us to mention, but we want to thank each and every one of you.

Attached is a letter just received by FTT from a female soldier along with the Troops Wish List. Paula was just interviewed and one thing she said stood out. "Everyone feels good by what they're doing!" One can only imagine how good the other soldiers feel by what FTT is doing for them.





Dear Mrs. Cornell and Mrs. Josephson;

My name is Carleen Gates and i am a US Sailor currently deployed to Afghanistan for 11 months. Yes, not the regular deployment. :)

The reason i'm emailing is because it really touched me when i received a package just for a female. Normally females are forgotten as society and the media only speak and mention of men in the military. As a woman and a mother, a single mother, deployments are just as hard and sometimes even harder than some men because as we deal with the danger out here we also have to try to focus on the mission at hand and not our kids at home. A few of other single mothers out here doing the same thing that our male counterparts are doing sat around and had this discussion of how forgotten and how unappreciated women serving are.

We logged on to another site to purchase t-shirts for our kids and all we found was MY DAD..... or MY FATHER.....

We had to actually go to a custom made t-shirt site and had t-shirts custom made saying I'm PROUD OF MY MOM SERVING IN AFGHANISTAN..... and some others. Just like the men we serve proudly. We love what we do and some of us can't see ourselves doing anything else but defending our country and our people.

Anyway, the personalized female care packages were a big hit and were greatly appreciated by myself and all the females out here. They were the talk in our locker room. One of the ladies were so touched by the thought that we're not forgotten that she actually cried. We traded nail polish and body lotions and caught up on some hollywood gossip from the magazines you sent us. :) And was just so grateful that someone remembered that females are serving here also.

To all who put these packages together. THANK YOU FROM MYSELF AND ALL MY FEMALES.

# FTT FOR THE TROOPS®

## TROOPS WISH LIST

Baby Wipes	AA and AAA Batteries
Granola and Power Bars	Beef Jerky*, individual snack size
Dried Fruit, Raisins, Nuts	Trailmix, PopTarts, individual snack items
Small Canned Tuna or Chicken	Small jars of Peanut Butter and Jelly
Gum, Candy, and Hard Candy	Potato Chips (in cylinder cans)
Presweetened Powdered Gatorade and Crystal Light, individual size	Crossword, Word Search, Sudoku, Puzzlebooks, and Paperback Novels
Small Handheld or Travel Size Games	Stationery Items, Pens, Blank Cards
DVDs, Magazines, Sunday comics	Lip balm, Toothpaste, and Toothbrushes
Athletic Socks, Neck Cooler Ties	Cotton Swabs, Q-Tips and Pipe Cleaners

**Letters of Appreciation to the Troops From Children and Adults**

**Tax Deductible Monetary Donations for Postage**

### Also

**Non-prescription medication such as aspirin/ibuprofen, eye drops, foot powder, anti-itch cream, sunblock, and cold/allergy medications.**

\*AFGHANISTAN AND IRAQ ARE ISLAMIC COUNTRIES. NO PORK PRODUCTS CAN BE SENT.  
Due to postal regulations, no aerosol containers can be mailed.

## **For The Troops**

P.O. Box 630103, Simi Valley, CA 93063

Headquarters: 2872 Cochran Street, Simi Valley, CA 93065

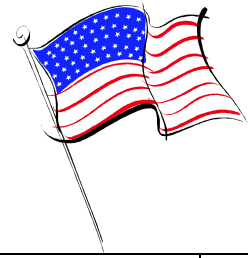
**E-mail:** USA@ForTheTroops.org  
Paula Cornell (805) 306-0830

**Website:** www.ForTheTroops.org  
Janie Josephson (818) 640-3846

For The Troops is a California 501(c)(3) non-profit corporation  
Federal Tax ID # 20-8099782

**THANK YOU FOR YOUR SUPPORT ON BEHALF OF OUR TROOPS!**

# August Calendar of Events 2011



<i>Sun</i>	<i>Mon</i>	<i>Tue</i>	<i>Wed</i>	<i>Thurs</i>	<i>Fri</i>	<i>Sat</i>
	<b>1</b> 6:00-Preschool 8:30- C Players 6:00-Stretch N Tone 7:00-Al-anon 7:30-Al-ateen  <i>Pastor out of office</i>	<b>2</b> 6:00-Preschool 8:30- C Players 10:00 SVLC @ Attic 6:00-Stretch N Tone 6:30-SVCC Prayers  <i>Pastor out of office</i>	<b>3</b> 6:00-Preschool 11:30- C Players 4:30-SVLC @ Samaritan Center 7:00- Youth Group 7:00-SPARK 7:00-Grief Support <i>Pastor out of office</i>	<b>4</b> 6:00-Preschool 8:30- C Players 10:00-SVLC@Attic 3:00-SWC 5:00-Café Open 6:00-Stretch Tone 6:30-Al-anon <i>Pastor out of office</i>	<b>5</b> 6:00-Preschool 8:30- C Players  <i>Pastor out of office</i>	<b>6</b> 8:00-Alanon 10:00-AA-Library 5:30-Simi Valley Christian Church  <i>Pastor out of office</i>
<b>3</b> 8:30-Traditional 9:45-Contemporary 11:00-Blended 11:00-NA 3:00-CP Service 7:00-Al-anon-CR  <i>Pastor out of office</i>	<b>8</b> 6:00-Preschool 8:30-C Players 6:00-Stretch N Tone 7:00-Al-anon 7:30-Al-ateen  <i>Pastor out of office</i>	<b>9</b> 6:00-Preschool 8:30-C Players 10:00 SVLC @ Attic 6:00-Stretch N Tone 6:30-SVCC Prayers 7:00-Council Mtg.  <i>Pastor out of office</i>	<b>10</b> 6:00-Preschool 8:30-C Players 7:00- Youth Group 7:00-SPARK 7:00-Grief Support  <i>Pastor out of office</i>	<b>11</b> 6:00-Preschool 10:00-SVLC@Attic 11:30-NAOMI 3:00-SWC 5:00-Café Open 6:00-Stretch Tone 6:30-Al-anon 7:00-Stephen Min <i>Pastor out of office</i>	<b>12</b> 6:00-Preschool 8:30- C Players  <i>Pastor out of office</i>	<b>13</b> 8:00-Alanon-CR 10:00-AA-Library 10:00-SVLC @ Luther's Attic 5:30-Simi Valley Christian Church  <i>Pastor out of office</i>
<b>14</b> 8:30-Traditional 9:45-Contemporary 11:00-Blended 11:00-NA 7:00-Al-anon-CR  <i>Pastor out of office</i>	<b>15</b> 6:00-Preschool 6:00-Stretch N Tone 7:00-BSA #698-Hall 7:00-Al-anon 7:30-Al-ateen  <i>Pastor out of office</i>	<b>16</b> 6:00-Preschool 10:00-SVLC@Attic 6:00-Stretch N Tone 6:30-SVCC Prayers 7:00-Happy Squares  <i>Pastor out of office</i>	<b>17</b> 6:00-Preschool 7:00- Youth – YR 7:00-SPARK 7:00-Grief Support  <i>Pastor out of office</i>	<b>18</b> 6:00-Preschool 10:00-SVLC @ Attic 3:00-SWC 5:00-Café Open 6:00-Stretch N Tone 6:30-Al-anon 7:00-Youth Bd. Mtg 7:00-Men's Group <i>Pastor out of office</i>	<b>19</b> 6:00-Preschool 8:30-C Players  <i>Pastor out of office</i>	<b>20</b> 8:00-Alanon-CR 10:00-AA-Library 10:00-SVLC @ Attic 5:30-Simi Valley Christian Church  <i>Pastor out of office</i>
<b>21</b> 8:30-Traditional 9:45-Contemporary 11:00- Blended 11:00-NA 7:00-Al-anon-CR  <i>Pastor out of office</i>	<b>22</b> 6:00-Preschool 6:00-Stretch N Tone 7:00-BSA #698-Hall 7:00-Al-anon-YR 7:30-Al-ateen-Choir  <i>Pastor out of office</i>	<b>23</b> 6:00-Preschool 10:00-SVLC@ Attic 6:00-Stretch N Tone 6:30-SVCC Prayers  <i>Pastor out of office</i>	<b>24</b> <i>School Begins</i> 6:00-Preschool 8:30-GSLS 7:00-SPARK 7:00-Grief Support  <i>Pastor out of office</i>	<b>25</b> 6:00-Preschool 8:30-GSLS 10:00-SVLC @ Attic 3:00-SWC 5:00-Café Open 6:00-Stretch N Tone 6:30-Al-anon 7:00-Property Mtg. 7:00-Stephen Min.  <i>Pastor off</i>	<b>26</b> 6:00-Preschool 8:30- C Players  <i>Pastor off</i>	<b>27</b> 8:00-Alanon-CR 10:00-AA-Library 5:30-Simi Valley Christian Church  <i>Pastor off</i>
<b>28</b> 8:30-Traditional 9:45-Contemporary 11:00- Blended 11:00-NA 7:00-Al-anon-CR  <i>Pastor out of office</i>	<b>29</b> 6:00-Preschool 6:00-Stretch N Tone 7:00-BSA #698 7:00-Al-anon-YR 7:30-Al-ateen-Class  <i>Pastor out of office</i>	<b>30</b> 6:00-Preschool 10:00-SVLC@ Attic 6:00-Stretch N Tone 6:30-SVCC Prayers  <i>Pastor out of office</i>	<b>31</b> 7:00-Yourth – YR 7:00-SPARK 7:00-Grief Support  <i>Pastor out of office</i>			

