

# Welcome

Shepherd of the  
Valley Lutheran Church

## October Newsletter

**You** are invited to share a *free* community meal with your neighbors every Thursday 5:00 p.m. at Still Waters Café located in Simi Valley at 4191 Cochran Street call 805-526-7577



**Still Waters Café** is looking for:

**volunteers** who are willing to commit to:

**one Thursday** a month from **4:45 p.m. – 7:00 p.m.**

There are many jobs that need to be done and now with summer approaching, our youth programs that volunteered are not in school. Jobs might include serving desserts, helping with dishes, being a runner, etc. If you are willing to commit to one Thursday a month, please contact Ray Valderrama at 527-4061 and your name will be put on the list.



*Dear Friends and Family, if there are friends and loved ones whom you would like to have prayers for, or military persons on active duty, please contact the church office at 526-7577 and we will list them in our bulletin and newsletter.*

### **REMEMBER IN PRAYER...**

Shepherd of the Valley Lutheran Preschool,  
Good Shepherd Lutheran School and our church leaders.

### **WE EXTEND OUR CHRISTIAN SYMPATHY TO**

Patricia Stuen and family on the loss of her mother May DeJacomio.

**Undergoing cancer therapy** ... Craig Wells, Gary Lee Boswell (son of *Gloria Holst*),

Willie Cornforth (*Allison Graybill's Aunt*) Shirley Stienke,

Heinz Raaber (*cousin of Joanne Askew*) Carol Williams (*Al & Joanne Askew's daughter*)

Terry Labrum (*SVLC Preschool Director*),

**Under convalescent or hospice care...**

Tim Simpson (*Minn Simpson's son*) Rev. James Cherrill (*Cathie Badillo's uncle*), John Moore

**Undergoing surgery, various tests, treatments, recuperating and continued comfort...** Eloise Cooley (Marcia's

Cooley's mother), Pastor Leslie Soyster, Ron Schultze family, Connie-Kieffer-Collins, June Goldberg,

John Yanuklis, Becky Counts, Kent & Rosalie Fredrick, Jenny & Marvin Kidd, Dewey Blowers.

### **Our Military Personnel now serving:**

Joe Anderson, Dan Balaun, David Bond, Jeffrey C.A. Bower, Wayne Combs,

Tyson and Blake Crosby, Nisha Dean, Shane Denning, Richard Deobler, Robert Deobler,

Travis Girard, Nick Goldsmith, Jorden Gutowski, Mike Hultman, Michael Kidd,

Frank King, Chris Labelle, Brett Launer, Brian Lowen John Parker, Brian Richardson,

Jonathan Scholberg, Raymond Schooler, Captain Ted Slocum, Allen Steinke

Cpl. Brett Tyre, Sgt Elliott Van Marion, Thomas Weaver, Matthew Wilkins



*Thank you for your service*



Dear Fellow Pilgrims,

What kind of neighbor are you? If someone were to ask your neighbor how they would describe your “neighborliness”, how would they describe you? Would they describe you as the noisy one? The absent/invisible one? The friendly one? The one most likely to stand beside them in times of crisis? The one who puts the “neighbor” in neighborhood?



How would your neighbors describe your “neighborliness”? Does it matter if we’re good neighbors? Does anyone really care as long as we take care of our lawns and don’t make loud noise after dark? In the grand scheme of things, what difference does our “neighborliness” make?

If we take Jesus’ teachings to heart, it makes a lot of difference. Jesus holds neighborliness in such high regard as to make it a pretty essential spiritual practice. And too often, unfortunately, too many of us are invisible, absent neighbors, no neighbors at all. Often we are always running off to church, to Bible study, to committee meetings, never having time to play golf or go for a walk, or catch a cup of coffee with a neighbor (or helping a mugged Samaritan lying by the side of the highway). Sadly, I don’t think there will be a nationwide Christian radio broadcast called, “Focus on the Neighborhood”, anytime soon. But there should.

When pressed by the religious leaders to name the most important commandment Jesus answered that all the laws and the prophets could be summed up in two commandments, not one. Jesus said, “Love the Lord your God and love your neighbor as yourself.” Have we ever considered that we show our love for God by how we love our neighbor? Jesus seems to say it is so. How would your neighbor describe you?

The final words spoken by the worship leader at all three worships each Sunday are the same. “Seek the Lord. Study God’s Word. Serve the World.” These words are to remind us that by loving and serving our neighbor we are loving and serving God. And the congregation responds, “Amen (So be it)! Alleluia! Great final words to remind us of what we are called to do and be about.

Your Partner in Ministry,  
Pastor Gary

**Confirmation Classes begin on Wed.  
October 5<sup>th</sup> 7:00 p.m. Meet in Eichele Hall**



---

## Sunday School News

Sunday School is back for grades K through 12! We had a blast on Rally Day playing Minute to Win It and munching on hot dogs. The next week was Game Day – Sunday School is a blast!! If you haven’t joined us yet this year, please come! We look forward to seeing you!!

-Grades K-8 meet at 9:45 am each Sunday. Students meet upstairs in the classrooms and return to church after the sermon so they can commune with their families.

-Grades K-5 meet in the classrooms and grades 6-8 meet in the Youth Room.

-Grades 9-12 meets in the Youth Room at 11 am each Sunday.

Any questions or need more information? Please call or email.

In His Service,

Grades K-5: Lisa Lewis (olseysue@sbcglobal.net or 527-6379)

Grades 6-8: Angela Hess (ahess91@roadrunner.com or 526-3731)

Grades 9-12: Allison Graybill (we4grays@roadrunner.com or 583-1209)

# New Orleans News



Up to date information for the parents  
and youth attending the New Orleans Gathering

## Gathering Theme:

We gather as citizens with the saints to learn to love like Jesus by practicing discipleship through peacemaking that works for justice.

Thank you to all the parents and youth who attended Sunday's NOLA Gathering planning meeting. It was very successful.

As a reminder, Gathering registration paperwork and deposit are due by Sunday October 2, 2011. If you have any questions, please contact Corrine Stevenson at [StevensonsRUS@msn.com](mailto:StevensonsRUS@msn.com) or one of the team leads.

## Fundraising Updates

Rally Day was a success. We raised \$266.91 towards the New Orleans Gathering. The hot dogs were the best. Thanks to everyone who pitched in.

We don't have a total yet from our Famous Dave's Restaurant night, but there were a lot of SVLC folks who came out. I'll keep you posted in the next newsletter



## Upcoming Events

Wednesday, October 26<sup>th</sup> we have our next restaurant fundraiser at the Souplantation in the Simi Town Center. This event is sponsored by the Hess Family. Join us for the delicious salads, soups and all the extra goodies. Attached to this email is the flyer that you will need to bring with you.



Be on the lookout for information on our upcoming Rummage Sale, sponsored by the Sale Family in October.

## Kohl's Cares

One of our N/O parents is the liaison for the Kohl's Care program. Kohl's needs a minimum 4-6 weeks advance notice to process an application and get employees lined up to help. Kohl's provides up to 5 employees for about 3 hours for a project or event. The great news is the Youth Group gets a check for \$500.00. If you are interested in using this program in conjunction with your fundraiser, please contact Linda Schultz at [Shultz-Michael@sbcglobal.net](mailto:Shultz-Michael@sbcglobal.net). Just a note, there are several groups who want to use the program during the holidays so contact Linda a.s.a.p. if your event is this year. Below is a link with all the information regarding the Kohl's Care program.

<http://www.kohlscorporation.com/communityrelations/Community04D.htm>

Listed below are the Gathering Teams and their responsibilities. A great big THANK YOU, to all the parents and youth volunteers that will be making this trip a success.

### COMMUNICATION - LISA GEARHART

Picture taking - Chris Fisher, Shannon Roche  
Making a scrapbook - Shannon Roche  
Journals - Kelli Stephens  
Making up fliers - Doris Sale

Sunday Morning announcements - Tania Alcalá, Linda Watters

Pictures and end of year cd rom for all - Linda Schultz

### GATHERING IDENTITY - SHELLEY MCLAIN

Committee consists of Allison Graybill, Julie Honda, Lisa Lewis, and Carolyn Oaks

Responsibilities include t-shirts/hats/etc., swaps,

### Servant Opportunities - Angela Hess

If you would like to add something to the newsletter, please submit to Lisa Gearhart at [Lisagearthart@sbcglobal.net](mailto:Lisagearthart@sbcglobal.net) Please have your information to me by the 20<sup>th</sup> of each month to be published by the 1<sup>st</sup>.

### SPIRITUAL - KATHY WESTERDOLL

Secret Prayer Partners - Kathy Westerdoll  
Appreciation cards - Nikki Plyler  
Gathering Bags - Sandi Kalinke and Lara Baas



# October Fellowship Event

Join us on Oct. 30 for a spooky good time at the High Street Arts Center (formerly Moorpark Melodrama) for the musical "Little Shop of Horrors". Matinee starts at 2:00 pm and followed by dinner at the WoodRanch B-B-Q. Sign ups on the patio. Tickets are \$12.00. Last day to sign up is Oct.23.



# Words For Women



A Newsletter for the Women and Friends of Shepherd of the Valley Lutheran Church

\*\*\*\*\*

A special thank you to the Endowment Committee. They have blessed us again with matching funds from our Waffle Breakfast. We will present a check for a total of \$900.00 to the Pre-School. These funds will be used to replace the kitchen floor, strip and wax the floors and contribute to new mini blinds for the rooms.

## Upcoming Events



Ladies Fashion Show - 10/9/11 12:30 p.m. in Eichele Hall. Our very own ladies from the church will be modeling the latest fall fashions in all sizes and at outlet prices. If you like it you can order it right there on the spot. Cost for this event is \$25.00 per ticket. This will include a luncheon and show. Net proceeds will be donated to Shepherd of the Valley Pre-School for their much needed upgrades including new privacy stalls for the children's bathroom.

In addition to the Fashion Show, we will be selling tickets for a Quilt Raffle Drawing. The amazing women of our church, who design and sew these wonderful prayer quilts, spend their precious time and money creating the quilts to comfort so many friends and family who are struggling. Up for raffle are a Christmas Quilt and a Baby Quilt. Both are exquisite and will be on display. The raffle will take place on Wednesday Night 11/23/11 during the Thanksgiving Pie Social. All proceeds will go back to the quilters for supplies, so they can continue this much appreciated ministry. A special thank you to our quilters Leona Stewart, Lynn Featherston, and Gail Garon.



Friends in Need Bake Sale - 10/23/11 - Please bring your yummy baked goods on Sunday before the 8:30 service. All proceeds will go to the "Friends in Need" ministry here at church. We purchase grocery store scrip for Pastor Gary to give out when those who are in need visit him at the church office.

If you would like to be on our e-list, please email [Lisagearhart@sbcglobal.net](mailto:Lisagearhart@sbcglobal.net). We'll make sure your name gets added.

## **SPARK** 3<sup>rd</sup> – 5<sup>th</sup> graders

We meet in the upstairs SAC room on Wednesdays from 7-8:15 p.m.

Please join us for a relaxing evening of fun, games, and bible study.

Friends are always welcome.

Thank you to all the middle students who joined us during the summer break! ☺

Call Adrienne Stuck at 520-6947(h).



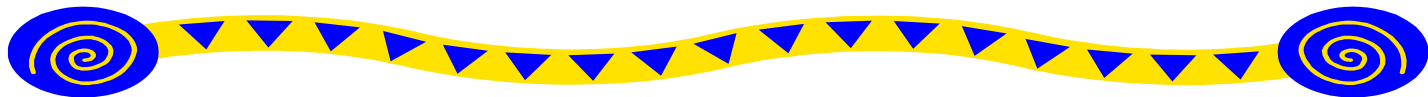
Relay will be October 15 & 16, 2011 at Rancho Simi Community Park. Relay for Life is the American Cancer Society's signature event. It is a 24 hour team event that raises awareness of cancer in the community and raises funds to fight cancer.

Throughout the event, Relay for Life teams commit to keeping at least one member walking the track . . . because cancer

never sleeps. Cancer also knows no race, gender or age. Anyone may walk, from the young to the old. If you would like to join our team you can register at [www.main.acsevents.org/goto/shepherd](http://www.main.acsevents.org/goto/shepherd). If you are interested in sponsoring one of our walkers you may also do that at our website [www.main.acsevents.org/goto/shepherd](http://www.main.acsevents.org/goto/shepherd). If you have any questions please contact me.

**Julie Honda 341-3866** R6Hondas@roadrunner.com

Website [www.main.acsevents.org/goto/Shepherd](http://www.main.acsevents.org/goto/Shepherd)



## *Samaritan Center of Simi Valley*

Shepherd of the Valley Lutheran Church  
Serves a meal to the less fortunate at the  
*Samaritan Center* – located on Royal Ave.

The 1<sup>st</sup> Wednesday of every month from 4:00-6:00 p.m.

This is a church service project and we need help.

We need volunteers to do the following: buy and deliver food to the Samaritan Center, serve food **or** donate money.

If you would like to help, please contact Yvonne Baird at 584-2521.

Thank you for your prayers and support for this important ministry.

## *Stamps – Stamps – Stamps...*

**On behalf of the Women's group, and in support of various charities here in California as well as around the country, please save used postage stamps. You can leave them on the envelope or clip about 1/4 inch around the stamps, pop them in an envelope or baggie and drop them off in the narthex the next time you visit our pretty little church.**

**It's quick; it's easy, and it means a lot to the folks we help.**

## *Interface Ministry*

As an ongoing ministry of SVLC we collect items for personal care bags at the monthly Women's Circles, or by taking your donation to the Church office. These items then go into a care bag and are given to Interface for their Battered Women's Shelters throughout the county.

The items needed to make a care bag are (in regular sizes): Shampoo, Conditioner, Brush, Comb, Lotion, Toothbrush, Toothpaste, Soap, Deodorant, Tampons, Disposable Razors, Pocket Size Kleenex. In 2010 twenty bags were donated to Interface!

Individual size lotion, soap, shampoo etc. from motel/hotel stays are also appreciated as they are taken to the Samaritan Center for use. If you have any further questions regarding this ministry please contact Jennifer Wacenske @ 581-2923.



**Christ Caring for People through People** - That's the motto of Stephen Ministry.

The Stephen Minister's role is to bring God's love into the lives of people who are going through a difficult time or experiencing a crisis. What do Stephen Ministers do? They listen to you, care for you, support and encourage you, and pray with and for you. And in the midst of this confidential, one-to-one, caring relationship, God's healing love comes pouring through.

### **What you should know about Stephen Ministry**

Shepherd of the Valley has a system for training and organizing laypeople to provide one-to-one Christian care to hurting people in our congregation called **Stephen Ministry**. All Stephen Ministers receive 50 hours of training in care giving and attend continuing education classes every month that prepares them to listen and care for anyone going through a difficult time. The name Stephen comes from St. Stephen, who was the first layperson commissioned by the Apostles to provide caring ministry to those in need, (Acts 6).

Stephen Ministry began in 1975 when the Rev. Kenneth C. Haugk, Ph.D., a pastor and clinical psychologist, trained nine laypeople at his congregation in St. Louis to be **Stephen Ministers**. They assisted him in providing distinctively Christian care to members of the congregation and community. These trained caregivers were so enthused about their ministry; they encouraged Dr. Haugk to offer it to more congregations. Since that time more than 500,000 laypeople have been trained as **Stephen Ministers** in 50 states, 10 Canadian provinces and 24 other countries.

**If you or someone you know is facing a crisis--large or small--and could benefit from the caring presence of a Stephen Minister, call Pastor Gary at 805.526.7577.**

celebrating 40 years



## Shepherd of the Valley Lutheran Preschool

*"We believe that each child deserves the opportunity to grow and develop in a safe, loving and stimulating Christian environment. Children are treated with warmth and respect, and learn to appreciate their value and importance in god's world."*

Preschool officially started on September 6th. Even though our numbers are small (as are many schools in the area), we have an especially delightful group of children this year.

Our 3 year olds have been working on adjusting to a school routine, and that mommy will come back when school is over. They are learning how to take turns, clean up after they are finished with a job, and the fun of playing cooperatively with each other. This month they have also been talking about apples-their characteristics, counting them, tasting them, looking at them under a magnifying glass, cooking with them, and learning rhymes about them.

Our 4 year olds are busy also. They are working on sharing, taking turns and respecting the rights of others. They are talking about friends, and what it means to be a good friend. They are learning about letters and sounds the letters make, as well as letter formation.

We start our chapel time the first week in October, and the children always enjoy going over to the Sanctuary and hearing stories about God. They love singing our special "Chapel Time" songs, and we often hear them singing them at different times throughout the day.

Our make-over project is almost complete. The windows, tile floors, and doors have been replaced, and the outside painting project will be starting soon. Thanks for the support we have received with this project. The school is not looking so "tired" any more.

The preschool number is 805-526-9069.

SVLC Preschool Director

Terry Labrum

SCRIP



## ATTENTION: RALPH'S SHOPPERS

**Do you ever buy groceries at Ralph's? Do you use your rewards card? If so, you can contribute to our church by registering at the cash register. All you need to do is pick up a flyer at the Scrip table on Sunday, and present it to the cashier when you make your next purchase and swipe your Ralph's rewards card. It is simple and easy. No hassle or cost to you.**

**From then on during the year, whenever you make a purchase and swipe your card, Shepherd of the Valley will receive a percentage of what you spend through the courtesy of Ralph's Community Contributions program.**

**For those of you who are already enrolled, you must re-register again at this time to ensure that your contributions will continue for another year.**

**Thanks to those of you who have been participating, our church receives several hundreds of dollars each year from Ralph's. It is an exceptional program in aid of non-profit organizations, including us!**

**Please pick up your flyer as soon as possible and present it when you shop next. You need only do this once and from then on, just swiping your card will be enough (or using your phone number if it is linked to your card.)**

Stop by the SCRIP table Sunday, pick up your flyer, and we will answer any questions that you might have as well.

# Library

Did you ever stop to think that everyone either has/had grandparents or are grandparents? Amazing isn't it?

Unfortunately grandpaernts are often viewed with stereotypes. The little old grandma baking cookies, the elderly grampa taking the kids fishing. Then there is the middle aged grandma at the mall with her teenagers, the middle aged grandpa teaching his grandson how to change the oil in his car or the new grandpaents holding their precious bundle and wondering at this miracle of God.

Being the best grandparent in the world is perhaps the most rewarding job we will ever have. The book cart this month has help for all of you out there - How to understand your teenagers, books to read the little ones, and self-help books to get you through the years. One of your most important jobs is to teach your granchildren of any age that God loves them and in turn they need to learn to love others. For this, books are your most important resource.

Check out our book cart during the month of October for ideas and support.

Remember, books need to be checked out and they also need to be returned within two weeks. Unfortunately we often read the book, put it down and forget to bring it back.

*Please check through your shelves and return any books that are overdue. If you felt it was worth taking home to read, you need to give others that same opportunity.*

**Happy Reading ☺**

## PLEASE...HELP SUPPORT OUR SCHOOL

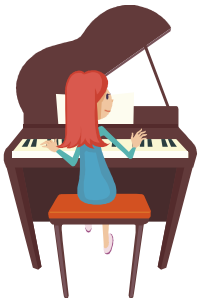


**Luther's Attic...**a thrift store in Moorpark at 189 High Street that helps support Good Shepherd Lutheran School.

**Give donations, shop and/or volunteer your time!!**

It all helps our Christian school ministry here in Simi Valley.

The proceeds from the store are split between the three schools that receive financial support from the store. The financial split is based on volunteer hours submitted by members from each of the churches (the more volunteer hours from your church the stronger the financial support). For further information call 805-523-7188.



**Piano lessons with *Carol Jackson***  
**reasonable prices - please call 805-822-7344**



# Calendar of Events

## October 2011



<i>Sun</i>	<i>Mon</i>	<i>Tue</i>	<i>Wed</i>	<i>Thurs</i>	<i>Fri</i>	<i>Sat</i>
						<b>BSA #698 Rummage Sale</b> 8:00-Alanon 10:00-AA-Library 5:30-Simi Valley Christian Church
<b>2</b> 8:30-Traditional 9:45-Contemporary 9:45-Sunday School 11:00-Blended 11:00-NA 12:00-New Member Class 7:00-Al-anon-CR	<b>3</b> 6:00-Preschool 7:00-SAC 8:30- GSLS Begins 6:00-Stretch N Tone 7:00-BSA #622 7:00-Al-anon 7:30-Al-ateen	<b>4</b> 6:00-Preschool 7:00-SAC 8:30- GSLS ½ day 10:00 SVLC @ Attic 6:00-Stretch N Tone 6:30-SVCC Prayers 7:00-BSA #622	<b>5</b> 6:00-Preschool 7:00-SAC 8:30- GSLS Begins 9:00-GSLS Chapel 7:00-Confirmation 7:00- Youth Group 7:00-SPARK	<b>6</b> 6:00-Preschool 7:00-SAC 8:30- GSLS Begins 10:00-SVLC@ Attic 3:00-SWC 5:00-Café Open 6:00-Stretch Tone 6:30-Al-anon	<b>7</b> 6:00-Preschool 7:00-SAC 8:30- GSLS Begins  <i>Pastor Off</i>	<b>8</b> 8:00-Alanon-CR 10:00-AA-Library 5:30-Simi Valley Christian Church
<b>9</b> 8:30-Traditional 9:45-Contemporary 9:45-Sunday School 11:00-Blended 11:00-NA 12:00-Fashion Show and Luncheon 12:00-New Member Class 7:00-Al-anon-CR	<b>10</b> 6:00-Preschool 7:00-SAC 8:30- GSLS Begins 6:00-Stretch N Tone 7:00-BSA #698-Hall 7:00-Al-anon 7:30-Al-ateen	<b>11</b> 6:00-Preschool 7:00-SAC 8:30- GSLS Begins 10:00-SVLC@ Attic 6:00-Stretch N Tone 6:30-SVCC Prayers 7:00-SVLC Council 7:00-BSA #622	<b>12</b> 6:00-Preschool 7:00-SAC 8:30- GSLS Begins 9:00-GSLS Chapel 7:00-Confirmation 7:00- Youth – YR 7:00-SPARK	<b>13</b> 6:00-Preschool 7:00-SAC 8:30- GSLS Begins 10:00-SVLC @ Attic 9:30-NAOMI 3:00-SWC 5:00-Café Open 5:30-GSA Mtg. 6:00-Stretch N Tone 6:30-Al-anon 7:00-Stephen Min.	<b>14</b> 6:00-Preschool 7:00-SAC 8:30- GSLS Begins 6:30-Pack #3643  <i>Pastor Off</i>	<b>15</b> <b>Relay- 4-Life</b> 8:00-Ala6on-CR 10:00-AA-Library 10:00-SVLC @ Attic 5:30-Simi Valley Christian Church
<b>16</b> <b>Relay- 4-Life</b> 8:30-Traditional 9:45-Contemporary 9:45-Sunday School 11:00- Blended 11:00-NA 7:00-Al-anon-CR	<b>17</b> 6:00-Preschool 7:00-SAC 8:30- GSLS Begins 6:00-Stretch N Tone 7:00-BSA #698-Hall 7:00-Hannah Circle 7:00-Al-anon 7:30-Al-ateen	<b>18</b> 6:00-Preschool 7:00-SAC 8:30- GSLS Begins 10:00-SVLC@ Attic 6:00-Stretch N Tone 6:30-SVCC Prayers 7:00-Happy Squares 7:00-BSA #622	<b>19</b> 6:00-Preschool 7:00-SAC 8:30- GSLS Begins 9:00-GSLS Chapel 5:30-GSA Mtg. 7:00-Confirmation 7:00-SPARK	<b>20</b> 6:00-Preschool 7:00-SAC 8:30- GSLS Begins 10:00-SVLC @ Attic 11:30-Y.I.M.A.H. 3:00-SWC 5:00-Café Open 6:00-Stretch N Tone 6:30-Al-anon 7:00-Men’s Group	<b>21</b> 6:00-Preschool 7:00-SAC 8:30- GSLS Begins  <i>Pastor off</i>	<b>22</b> 8:00-Alanon-CR 10:00-AA-Library 5:30-Simi Valley Christian Church
<b>23</b> <b>Women’s Bake Sale</b> 8:30-Traditional 9:45-Contemporary 9:45-Sunday School 11:00- Blended 11:00-NA 7:00-Al-anon-CR	<b>24</b> 6:00-Preschool 7:00-SAC 8:30- GSLS Begins 6:00-Stretch N Tone 7:00-BSA #698 7:00-Al-anon-YR 7:30-Al-ateen-Class	<b>25</b> 6:00-Preschool 7:00-SAC 8:30- GSLS Begins 10:00-SVLC@ Attic 6:00-Stretch N Tone 6:30-SVCC Prayers 7:00-BSA #622	<b>26</b> 6:00-Preschool 7:00-SAC 8:30- GSLS Begins 9:00-GSLS Chapel 7:00-Confirmation 7:00-Yourth – YR 7:00-SPARK	<b>27</b> 6:00-Preschool 7:00-SAC 8:30- GSLS Begins 10:00-SVLC @ Attic 3:00-SWC 5:00-Café Open 6:00-Stretch N Tone 6:30-Al-anon 7:00-Property Mtg. 7:00-Stephen Min.	<b>28</b> 6:00-Preschool 7:00-SAC 8:30- GSLS Begins 1:00-GSLS Fall Festival  <i>Pastor off</i>	<b>29</b> 8:00-Alanon-CR 10:00-AA-Library 5:30-Simi Valley Christian Church
<b>30</b> <b>Quarterly Meeting</b> 8:30-Traditional 9:45-Contemporary 9:45-Sunday School 11:00- Blended 11:00-NA 7:00-Al-anon-CR	<b>31</b> <b>Halloween</b> 6:00-Preschool 7:00-SAC 8:30- GSLS Begins 6:00-Stretch N Tone 7:00-BSA #698 7:00-Al-anon-YR 7:30-Al-ateen-Class					

**SVLC Congregational Quarterly Meeting**  
**Sunday, Oct. 30<sup>th</sup> 12:00 p.m.**

